

PASTEURCYL AND STERILCYL STANDARD, JUMBO, RADIO



High temperature data loggers (100°C and 140°), also with radio transmission

All versions of **SterilCyl** (140°C) and **PasteurCyl** (100°C) temperature data loggers have been developed for the different applications in the monitoring of temperature during sterilisation and pasteurisation processes. They can be adopted in the food, pharmaceutical/medical and laboratory fields easily.

System

The loggers can be used with two different software:

- **SPD**, for quick and simple monitoring: start the devices, do your mission, download data and analyse; receive data in real time via radio;
- **TS Manager**, for deep analysis and control: a **FDA 21 CFR Part 11 compatible software** with multi-level access and reports according to regulations. Designed for autoclave validation, from pharma/medical to laboratories, dentists and food.

Versions

There are three versions available:

- **Standard**: mini cylinder, best for **narrow pasteurisation tunnels and bottles**;
 - **Jumbo**: cylinder with **bigger memory and extended battery life**;
 - **Radio**: **real time monitoring** of temperature in autoclave and pasteurisation tunnels. No cable to be used and no hole to be made on the instrument wall, watch data coming directly on your PC screen.
- All loggers are connected to the PC by means of the USB DiskInterface using some special adapters.

Different probe lengths (20, 60, 100, 125 mm X 3 mm diameter or 100 mm X 5 mm diameter) give you the possibility to always **reach the core of your product** and get a **fast response time**, important for short processes.



Radio



Flexible probe

Applications

- Temperature monitoring of sterilisation and pasteurisation processes.
- Autoclave validation according to 21 CFR Part 11 regulations.
- Temperature monitoring during meat and ham cooking.

Fields of application



Healthcare



Pharma



Dentists

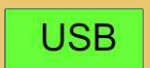


Food



Laboratory

Interface Communication



Pros

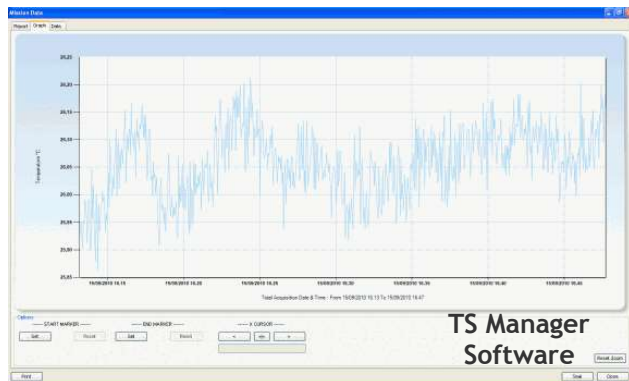
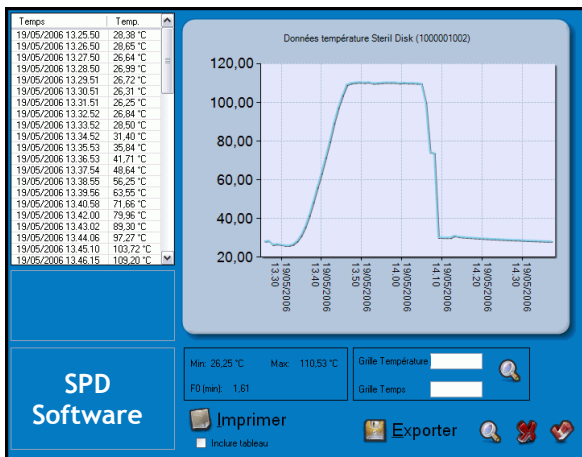
- High accuracy and resolution.
- Long battery life and with Jumbo version is even extended.
- Completely food grade and submersible.
- Printed reports compliant with health regulations and ISO (data are not editable in the software).
- F0 and PU calculation.
- Provided with **calibration certificate** SIT traceable.
- Can be fixed to food package and surfaces with the **Fastening System**.
- **Can be calibrated for low temperatures (-40°C).**
- **STANDARD AND JUMBO HAS BATTERY IS USER REPLACEABLE.**

Technical Data

Model	Standard	Jumbo	Radio
Dimensions	70 hh X 15 diameter (mm)	100 hh X 18 diameter (mm)	132 hh X 35 diameter (mm)
Probe size	20, 60, 100 125 hh or on demand X 3 diameter (mm) or 100 hh X 5 diameter (mm); flexible probes available		
Material Standard/Probe	Stainless steal AISI316L (completely Food Grade)		
Temperature range	PasteurCyl: 0 °C + +100 °C (up to 5 bar) – SterilCyl: 0 °C + +140 °C (up to 5 bar)		
Temperature resolution	0,04 °C		
Temperature accuracy	± 0,3 °C		
Number of acquisitions	15.000	120.000	15.000
Acquisition rate	From 1 every second up		
Battery life	2 years with standard use (user replaceable)	4 years with standard use (user replaceable)	2 years with standard use
Protection degree	IP68		
Communications	USB DiskInterface	USB DiskInterface +adapter	USB DiskInterface +adapter USB Radio Receiver

Software

Type	SPD	TS Manager
Operating Systems	Windows 2000, XP, Vista, 7 (32 and 64 bit)	
Data management	Missions sorted by start date and logger serial number; real time monitoring with radio transmission	Missions filtered by start date, logger type, serial number, customer/instrument validated and much more
Data display	Graph (with zoom) and table (exportable into Excel) and printed report of all the data	
Multi graph display	<u>Two or more missions can displayed on a single graph</u>	
F0 and parameters	Automatically calculates the F0 and the Z and N parameters of the formula can be set	
Languages	Italian, English, French, Spanish, German	English



PasteurCyl and SterilCyl, in all their versions, can come also with a **special flexible external probe**. The length of the stainless steel part of the probe is the same of the standard Jumbo probes (20, 60, 125 mm) and there is an extra teflon flexible cable that connects it to the main body of the device. Special springs protect the delicate parts and anti-break system is implemented in the connectors. With the flexible probes it is possible to use these devices also in places where there is not enough space to put the logger on or inside the the product's package.



Tecnosoft srl
Via Luigi Galvani, 4, 20068, Peschiera Borromeo (MI) - ITALY
Tel +39 0226922888 - Fax +39 0226922875
www.tecnosoft.eu - info@tecnosoft.eu
UNI EN ISO 9001:2008 Certified for Software development

Product Code:
ts10pca/g/b/c/h
ts10sca/g/b/c/h
ts10pcj1/2/3/d/5
ts10scj1/2/3/d/5
ts10pcra/d/b/c/h
ts10scra/d/b/c/h