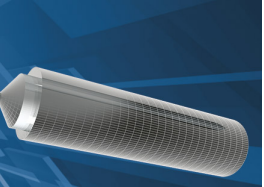


TempNFC RCE -80 (rigid case) with external probe



Rigid case version of the NFC contactless temperature data logger with cable and rigid metal probe of various lengths, calibrated from -80°C up to 20°C; it has a wide range of monitoring applications especially in the food and pharmaceutical industry, for continuous monitoring in ultra freezers and external probe managed through Android devices with dedicated App from Google Play. Allows to manage temperature monitoring using a Smartphone or a Tablet to INSTANTLY share the readings you downloaded.

With Reference Traceable calibration certificate and user replaceable battery.

The rigid metal probe is made with stainless steel AISI 316L, food grade, of 500 mm length and 3 mm diameter, èpointed.

Cable is 2 mm diameter and has a standard length of 50 cm.

Wall mount accessory available.



Main features

- Start and download using NFC Android devices (download App from Google Play)
- Long life battery: 3 millions of acquisitions
- Manual start option Mission status LED and button (running, stopped, OK, alarm)
- Check against alarm thresholds and transport duration
- MKT calculation is done on the App
- BarCode and QR Code scan of the items being monitored in the shipment
- Geolocalization of the start and stop positions, saved with the mission data
- View readings in graphical or tabular format
- Create mission templates to quickly start the devices, without entering settings every time
- Additional Information: sender, receiver, operator, notes etc.
- Automatically send PDF reports to the email address set by the sender
- Synchronization with the Tecnosoft Cloud ([TempNFC Ent App](#))
- Accredia (NIST equivalent) traceable calibration certificate on one or more calibration points available
- **Suitable for vaccines and drugs monitoring at -80°C**

Plus

- No extra accessory: your smartphone is all you need
- Small size suitable for every package and box
- Keep tracking of transported products along with temperature thanks to the bar code and QR codes
- Fast response time with the external probe
- User replaceable battery

The system

TempNFC data logger does not need of any additional accessory. Just download the Android App and you are ready to start using it.

Applications



Cold Chain



Logistic&Transport



Warehouses



Environment



Medical



Healthcare



Food & Beverages



Laboratories



Constructions



Industrial

Accessories

- TempNFC Ent
- Battery kit for TempNFC RC
- BlueLOG/TempNFC/TempBLE wall mount

Technical specifications

Dimensions	67 X 20 X 97 (mm)
Probe dimensions	Cable 500 l X 2 Ø (mm) or longer - Probe 50 l X 3 Ø (mm) pointed
Weight	18 g
Temperature range	-30 °C ÷ +60 °C
Sensor temperature range	-80 °C ÷ +20 °C
Standard calibration points (temperature)	-80/-40/0/20°C
Extra calibration points (temperature)	Within standard calibration range
Temperature resolution	0,03 °C
Temperature accuracy	± 0,2 °C (within the calibration range)
Memory (n. of acquisitions)	3.928 (may diminish according to the amount of notes)
Acquisition step	From 1 every second up, with 1 second steps
Buttons and functions	Start, status, limits check
Functions	LED for status: acquisition, stand by, out of limits
Battery type	3.0V CR2032 lithium, user replaceable (2017 IATA DGR: PI970 Section II, < 4 cells)
Battery life	+3.000.000 acquisitions at 1 second step continuously (calculated time @25°C. Battery life may be shorter if used in low temperatures)
Battery life	Up to 3 millions acquisitions @25°C +/- 10°C
Protection degree	IP67
Software&Mobile App	TempNFC Ent
It requires	NFC Android device