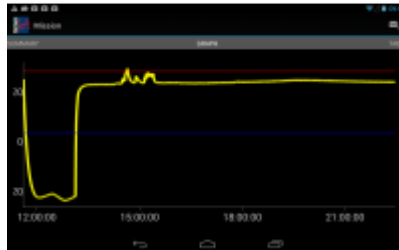


# TempNFC Pro



Temp NFC Pro is the advanced version of the Android App for the TempNFC temperature data logger management, downloadable from [Google Play](#). The other versions of the App are: Lite (free, limited functions, no Cloud synchronization) and Enterprise (free, activated through Tecnosoft Cloud subscription, complete functions).

Finally, you can manage temperature monitoring using a Smartphone or a Tablet and INSTANTLY share the readings you downloaded.



## Main features

- TempNFC programming and downloaded of the recorded data
- Create mission templates to quickly start the devices, without entering settings every time
- Real time checks against alarm thresholds and transport duration
- MKT calculation
- Bar Code and QR Code scan of the items being monitored in the shipment (possibility to input other data manually)
- Geolocalization of the start and stop positions, saved with the mission data
- View Readings in graphical or tabular format
- Additional Information: sender, receiver, operator, notes
- Automatically send PDF reports to the email address set by the person sending the goods
- Archive with recorded data, saved in the internal or external memory

## Applications



Logistic&Transport



Warehouses



Environment



Pharmaceutical



Medical



Healthcare



Food & Beverages



Constructions



Industrial



Laboratories

## Technical specifications

|                         |  |
|-------------------------|--|
| Operating systems       | Android 10 or above  |
| Data loggers supported  | TempNFC  |
| Data management         | Data stored in internal memory, SD Card; share via email   |
| Data display            | Graph, table, mission parameter summary, PDF   |
| Customizable parameters | Minimum and maximum limits, absolute minimum and maximum limits, activation energy for MKT calculation, mission maximum duration, notes and info (sender, operator, recipient), recipient email address for automatic delivery, manual start (start button). |
| Calculated parameters   | MKT  |
| It requires             | NFC Android device   |

