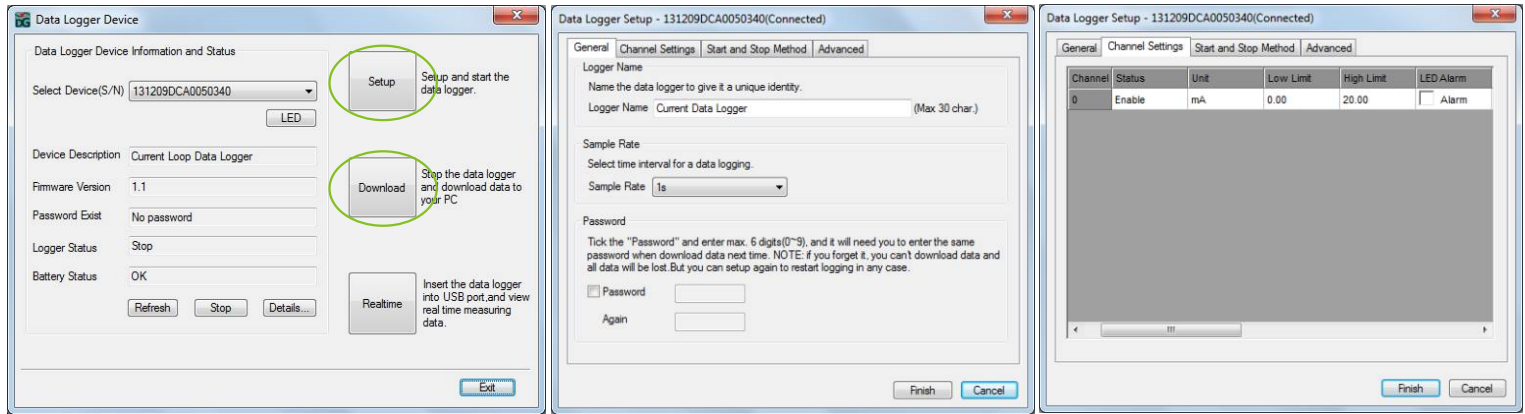


How to get actual graph from 4~20mA or DC voltage readings?

User needs to get actual graph from 4~20mA or DC voltage readings. For example, The measurement range of pressure transmitter is from 300hPa to 1100hPa, and it outputs from 4mA to 20mA. Data logger records the readings from 4mA to 20mA and then user can use the "Data Logger Graph" software to get the actual graph shown in hPa.

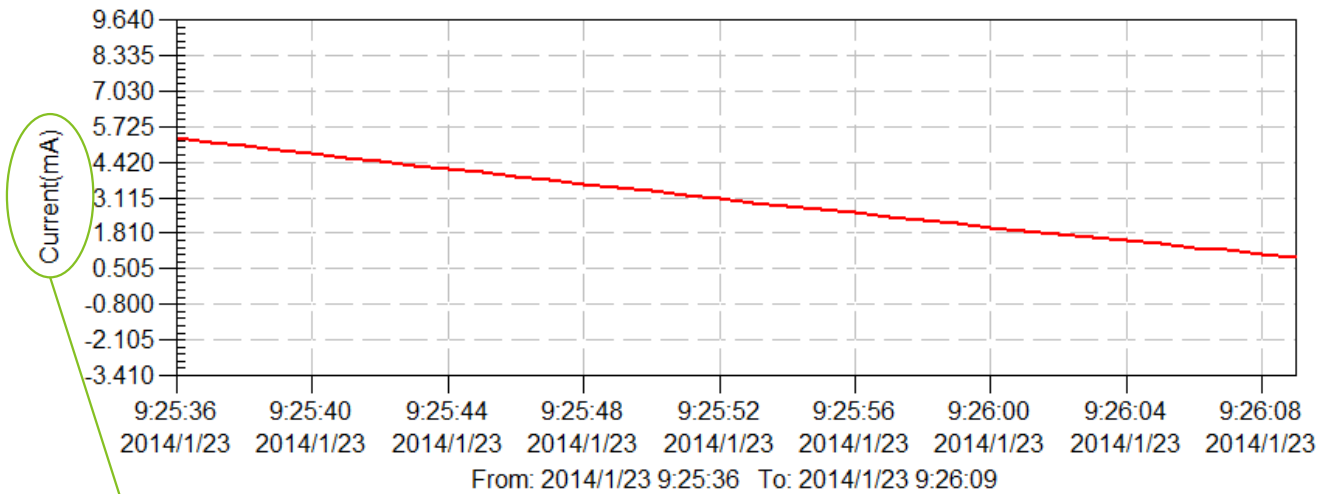
Step 1 Please see the "QUICK START GUIDE" (Included in the CD) to install the "Data Logger Graph" software and USB driver. Insert the data logger into PC's USB interface, and Start the "Data Logger Graph" software to setup, start logging and download data to PC.



Step 2 Open the downloaded data to graph.

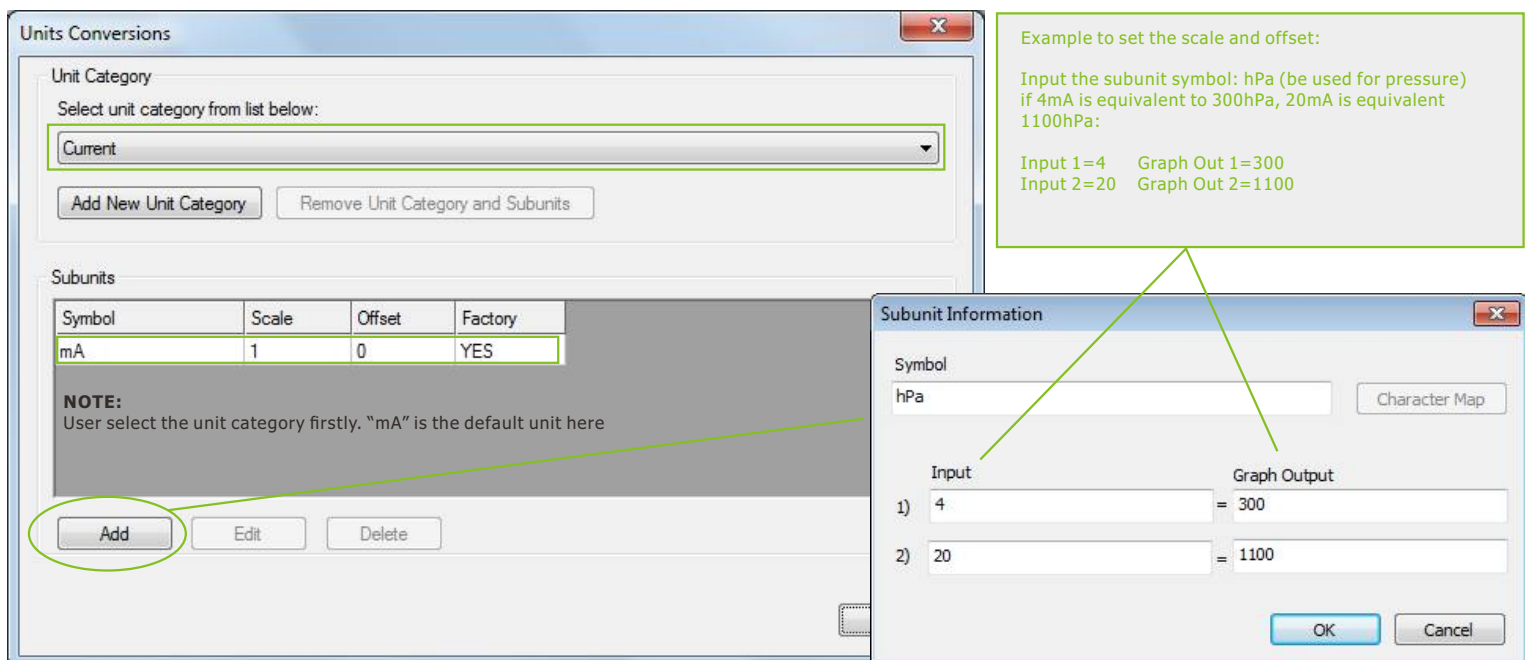
Current Data Logger

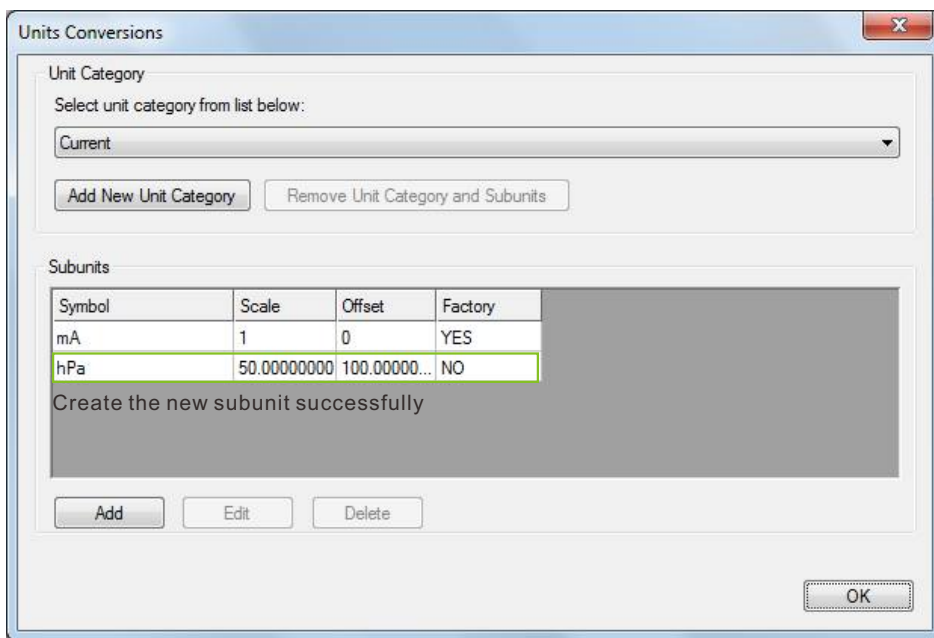
131209DCA0050340 - Current Data Logger: — Current(mA)



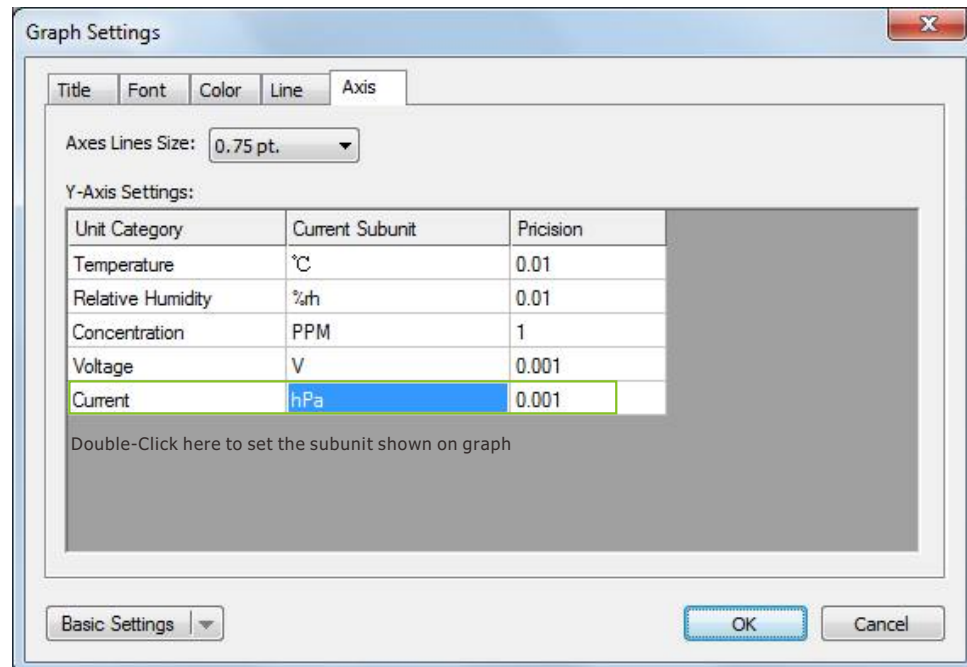
NOTE:
Graph is shown in default unit before setting new subunit

Step 3 Click the "Menu->Graph->Unit Conversions" to create new subunit.

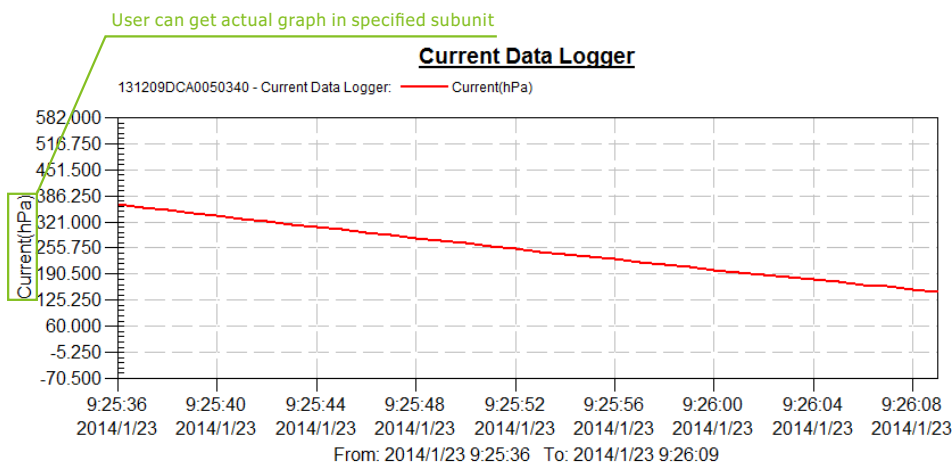




Step 4 Click the "Menu->Graph->Graph Settings" to set the shown subunit on graph.



Step 5 The actual graph will be shown as following.



Step 6 Please click the menu "File->Save" to save the subunit settings above.