

QucikStart Guide HumiPressureDisk Software Versione 1.0.8.10

HumiPressureDisk software is used to connect to pressure, temperature and humidity loggers.
Compatible models are:



PressureDisk



PressureDisk 05



PressureDisk V



RHTemp 80/125 L/XL

Compatible connection bay is:



DiskInterface HS

Download and Installation

Start the browser and open following link: www.tecnosoftware.eu/

Click on **Download Software** and scroll till you find HumiPressureDisk.



HOW DO YOU
MEASURE
QUALITY?

Iscriviti alla nostra newsletter Italiano English

Products catalog ▾

Company profile

Ricerca e sviluppo

Download Software

News

Contatti



Software&App

Catalogo prodotti // Software&App



I software e le app per le soluzioni di monitoraggio Tecnosoft sono dedicati a diverse applicazioni affinché ognuno risponda alle diverse esigenze che i vari campi richiedono. Dalle app per il monitoraggio di trasporti ai software di convalida di processo e strumenti, ognuno si interfaccia con diversi dispositivi e basi di comunicazione per poter gestire i dati, analizzarli e stampare report dettagliati.

Scroll till the *Download* section and download the **Complete software**.

NOTE: It will be downloaded a .zip archive. You cannot start installation within a compressed archive. Create a folder on your hard drive, maybe on the desktop, and copy-paste all items in the .zip archive in the new folder. Start installation from the new folder.

Software di gestione per logger PressureDisk e RHTemp con programmazione dei parametri di missione

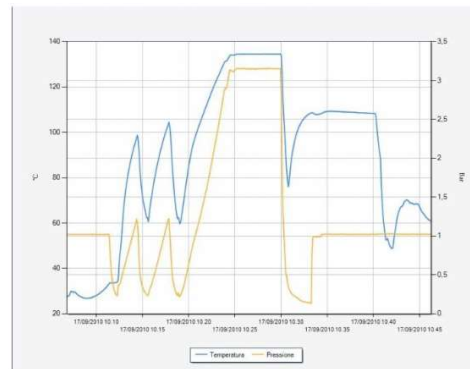
Software di gestione per PressureDisk (tutte le versioni), RHTemp (tutte le versioni), supporta DiskInterface H5. Il software è scaricabile dal sito web Tecnosoft ed è incluso nel prezzo delle basi di lettura.

Ha funzioni di base quali:

- programmazione dei parametri di missione dei logger (ritmo di acquisizione ecc.)
- scarico dei dati di missione
- visualizzazione del grafico dei dati
- esportazione dei dati in excel

[Richiedi informazioni](#)

[Scheda prodotto](#)



Download

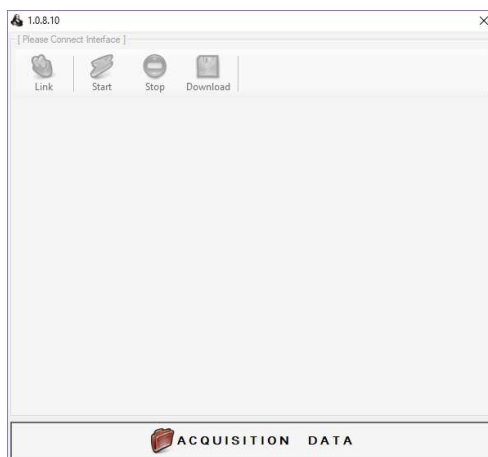
- [Download](#) DiskInterface H5, DiskInterface H5 Mini - USB driver Windows XP / Vista / 7
- [Download](#) DiskInterface H5, DiskInterface H5 Mini - USB driver Windows 8 / 10
- [Download](#) HumiPressureDisk 1.0.8.10 - Software completo (USB driver inclusi)
- [Download](#) DiskInterface (vecchio modello) - USB driver Windows XP / Vista / 7 / 8 / 10

Double click on setup.exe to start installation (from the new folder you have just created).

| Nome | Tipo | Dimensione compr... | Protetto d... | Dimensione | Proporzione |
|------------------|--------------------------------|---------------------|---------------|------------|-------------|
| buttons | Cartella di file | | | | |
| css | Cartella di file | | | | |
| Drivers | Cartella di file | | | | |
| EN | Cartella di file | | | | |
| IT | Cartella di file | | | | |
| Program | Cartella di file | | | | |
| US | Cartella di file | | | | |
| Utilities | Cartella di file | | | | |
| autorun.inf | Informazioni di installazio... | 1 KB | No | 1 KB | 30% |
| autorun.tag | File TAG | 1 KB | No | 1 KB | 0% |
| background.png | Immagine PNG | 1.222 KB | No | 4.602 KB | 74% |
| PressureDisk.ico | Icona | 46 KB | No | 145 KB | 69% |
| setup.exe | Applicazione | 362 KB | No | 932 KB | 62% |
| start.html | Chrome HTML Document | 2 KB | No | 5 KB | 74% |
| tecnosoft.png | Immagine PNG | 5 KB | No | 5 KB | 4% |
| Thumbs.db | Data Base File | 10 KB | No | 12 KB | 21% |

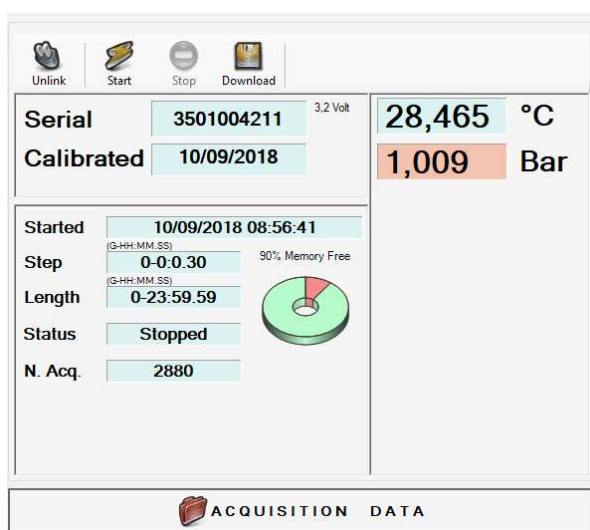
Main Window

Main window has action buttons on top, main part in the centre and Archive button on the bottom.



Data logger connection

Place the logger on the interface and click *Link*: connection will be established.



Following information are shown:

Serial: data logger serial number

Calibrated: data logger calibration date

Battery voltage **3,2 Volt**

Started: starting date&time of last mission

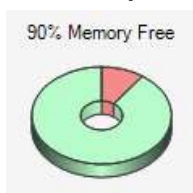
Step: acquisition step set last time

Length: running time of last mission recorded

Status: data logger status (Stopped; Started)

N. Acq.: number of acquisitions

Free memory



Real time reading of the values

28,465 °C
1,009 Bar

Data logger start

Click on *Start* to open settings:

Mission start date & time
 giovedì 11 ottobre 2018 15:36:34

Reading step
 Days 0 Hours 0 Min. 1 Sec. 0

Mission length
 Hours 24 Min. 0 Sec. 0

Temperature Start

Manual Start

Unlink Confirm

Mission start date & time: set here date&time you want the logger to start recording. Logger is synchronized with PC.

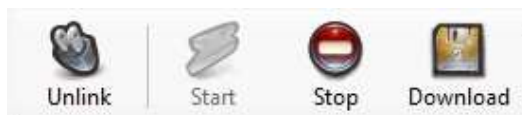
Reading step: set here acquisition step (every when logger must record a data)

Mission length: set here mission duration. Logger will stop recording after this time, unless memory is already full or logger is not stopped manually with the software

Temperature Start: enabling this option you will have the possibility to set a temperature which will start acquisition once it is reached

Manual Start: enabling this option logger will wait one minute before starting recording; if you apply a special clip it will be put in a standby mode and will start acquiring after you remove the clip (putting the clip back wont' stop acquisitions)

After starting the logger remember to click on *Unlink* before removing it from the interface.

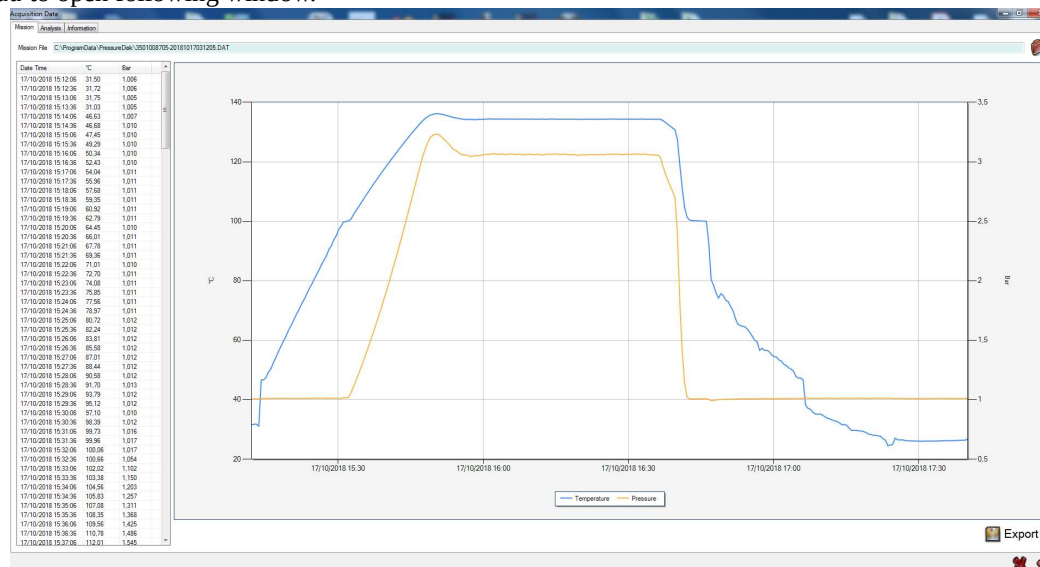


Data download

To download data place the logger on the connection bay and click on *Link*.

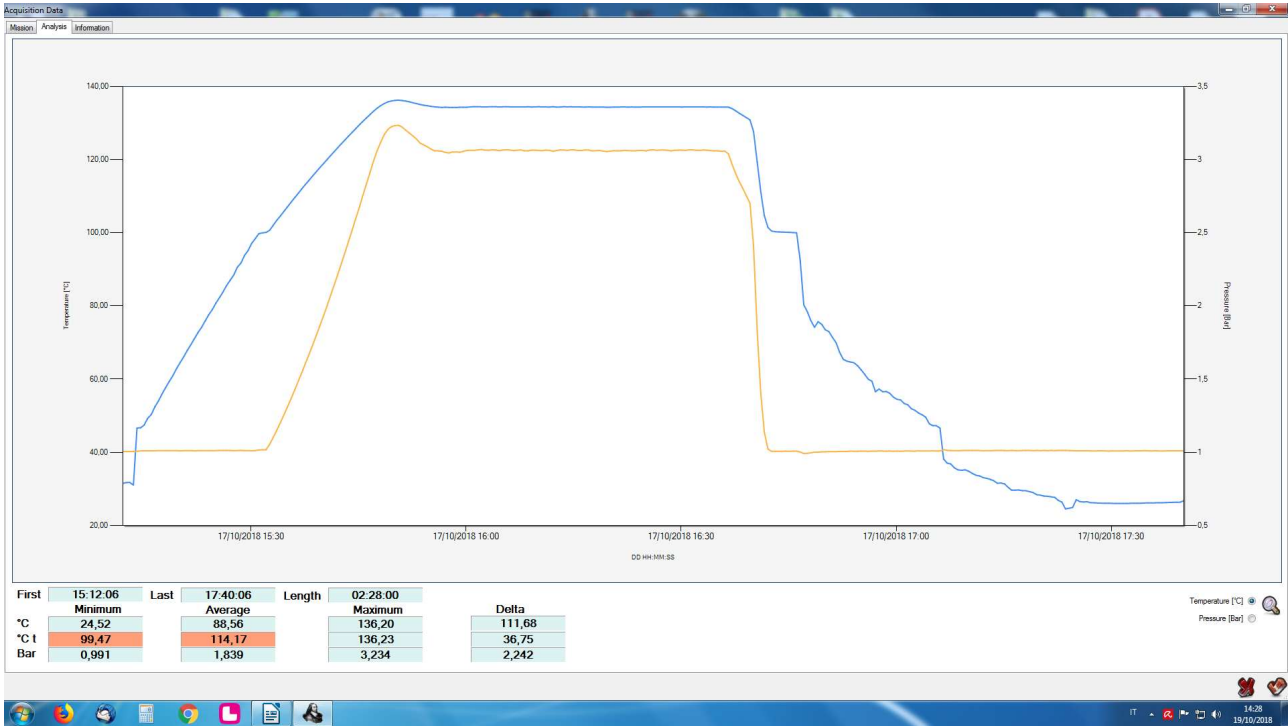
To stop the logger click on *Stop*.

Click on *Download* to open following window.

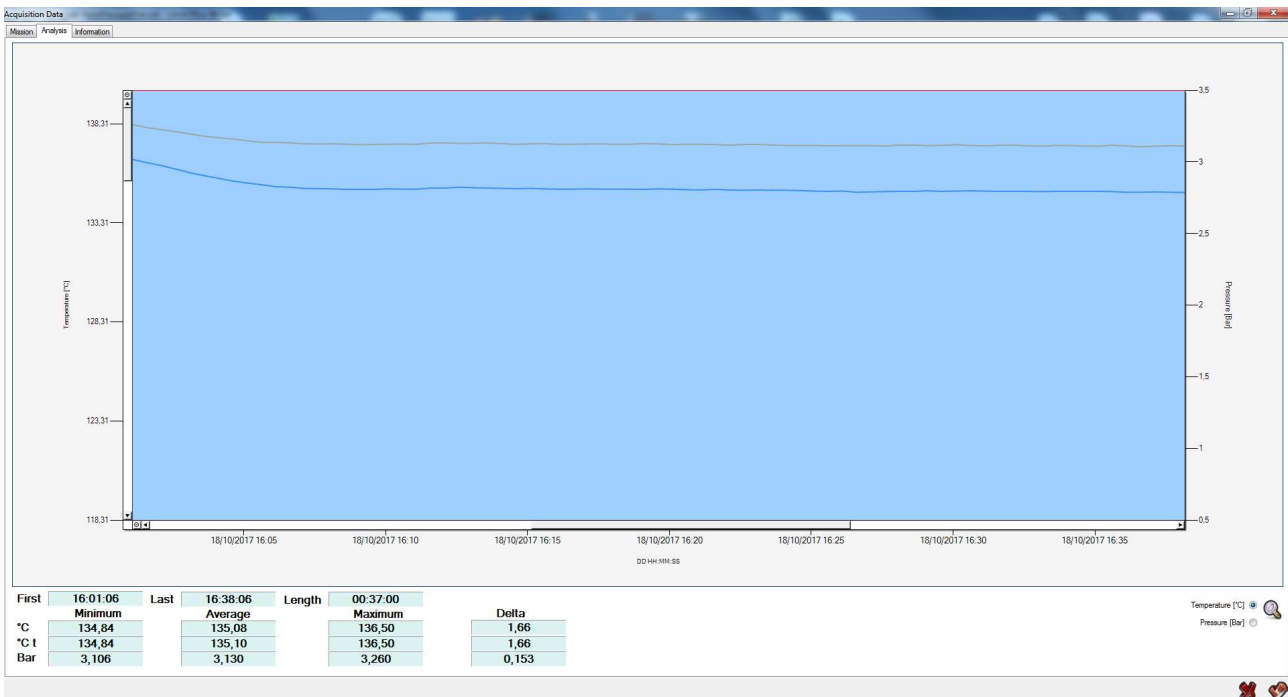


In the *Mission* tab graph and legend are shown along with the data table; you can export data into excel by clicking on *Export*, selecting name and path for the file.
 On top the path of the saved file is shown.

In the *Analysis* tab the graph is shown only.



You can zoom by pressing the left mouse button, drag the mouse and highlight an area to be zoomed and then click on the looking glass in the bottom right corner.



Under the graph some statistics are shown.

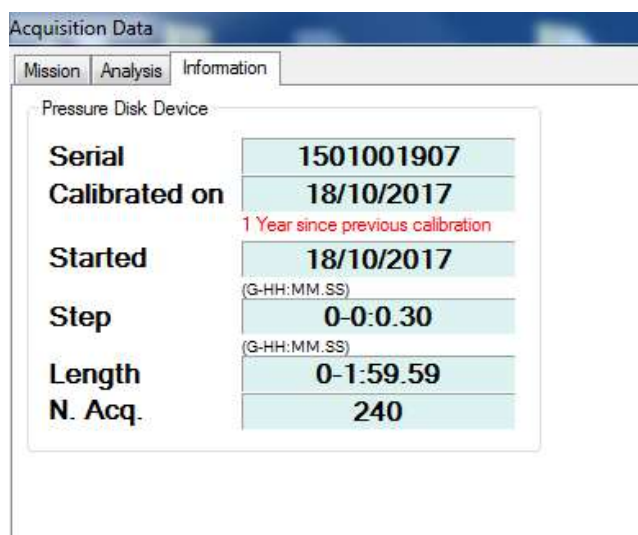
| First | 16:01:06 | Last | 16:38:06 | Length | 00:37:00 | Delta |
|-------|----------|------|----------|--------|----------|-------|
| | Minimum | | Average | | Maximum | |
| °C | 134,84 | | 135,08 | | 136,50 | 1,66 |
| °C t | 134,84 | | 135,10 | | 136,50 | 1,66 |
| Bar | 3,106 | | 3,130 | | 3,260 | 0,153 |

First: time of the first shown data
Last: time of the last shown data
Length: duration of the shown data
Minimum: max value shown
Average: average of the shown data
Maximum: min value shown
Delta: difference between max and min values shown

| | | | | |
|------|--------|--------|--------|------|
| °C t | 134,84 | 135,10 | 136,50 | 1,66 |
|------|--------|--------|--------|------|

°C t: here it is shown the theoretical temperature calculated from pressure in saturated steam. It is shown for PressureDisk only.

In the *Information* tab some information about the mission are shown:



Serial: data logger serial number
Calibrated: data logger calibration date (calibration is suggested annually)
Started: starting date&time of last mission
Step: acquisition step set last time
Length: running time of last mission recorded
N. Acq.: number of acquisitions